



# CATALOG AIRBUS A320 NEW TRAINERS



Our A-320 Cockpit Trainer allows trainees to practice the aircraft systems and procedures and to visualize the response.

It has been built by Opencockpits and is composed of fully functional cockpit modules.

Currently we offer 2 models of Cockpit Trainer:

- Open structure with Captain and F.O.
- Closed Cockpit shell with all components.

### **CAPABILITIES:**

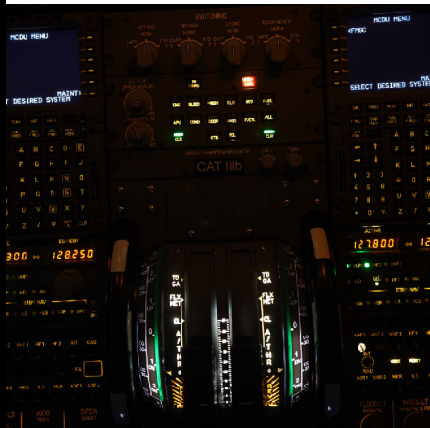
This trainer is capable of procedure training for normal, abnormal and emergency procedures.

The trainer included Engine instruments, IFR instruments, Navigation instruments, and can be practiced level of autoflight, F/D, Autopilot, Autothrottle and basic flights.

Can be practiced FMC procedures, checklists with engine fails, system fails...







All the components of the simulator are modular, which implies an easy and low maintenance cost.

The measurements are the same as in the simulated aircraft, as well as the functionalities, where practically all the elements are operative.

The panels are all backlit in warm white, generating the same cabin environment as the real plane.

Our products are adapted to the different uses that the client wants to make of the simulator, both for purely private use, and to be marketed as an entertainment simulator, in flight schools for procedural and flight practices ...

Opencockpits offers a wide variety of options to adapt to the needs of the client, and being directly manufacturers of the products we are open to specific adaptations that the client wants to make in his installation.

## MAIN INSTRUMENT PANEL

Manufactured in metal and painted in the oven with textured paint.

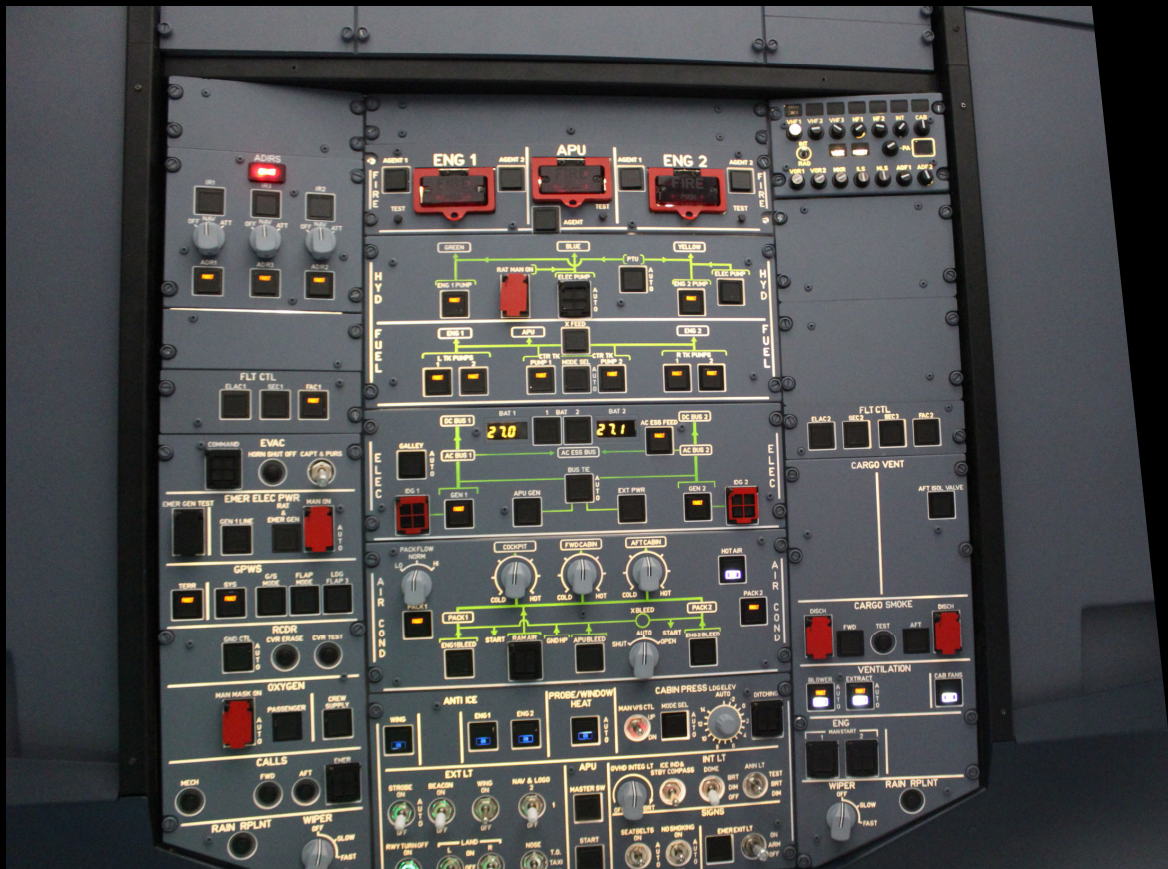
Includes all elements such as FCU, EFIS, Chrono, and other additional panels.

It has industrial displays for PFD, ND and EICAS, as well as Standby instruments, which are functional in terms of their visualization.

Includes ambient led light, landing gear lever, analog gauges, all of them operative.







## OVERHEAD

With the same philosophy as the rest of the cockpit, the Overheads are designed in a modular way, for easy and quick access to any of its parts, so that maintenance costs are minimal.

All the components are operative, as well as all its elements, including the fire engine system, as in the real plane. Two color panels, safe guards, and perfect legends, not visible when the indicators are not illuminated.



## PEDESTAL

This module is composed of a rack in aluminum painted in the oven, where following the same philosophy as in the rest of the cockpit, each element is connected individually, being able to replace each of them easily and quickly.

The configuration of 2 MCDU, 2 RMP, 2 AUDIO panels, and ATC allows a perfect simulation of the entire system, with special attention to the Flaps, Speed brake, Parking B. and ECAM panel.

All the backlight is controlled from the panel itself on the pedestal, including the door closing panel simulator.







## SIDESTICK & STEERING

All the controls of our cockpit are designed in a robust way, using iron and cast aluminum for them.

The control loading is not electronic, and is done by spring and neumatic system, using magnetic sensor for a perfect accuracy.

All controls use 12-bit analog / digital converters and software filter to achieve greater motion sensitivity.

The rudder is linked and adjustable in depth with indicative scale.

## THROTTLE

The Throttle has all the features of the real, with motorization for the movement of the Trim wheel and trim indicators.

The trim also works in manual mode and the entire module is backlit.

It is 98% built in aluminum and steel.







## PILOT SEATS

Impressive replica of the pilot's seat of the A320 in real scale, strong construction in steel, aluminum and oven-cured paint. The details of the product are:

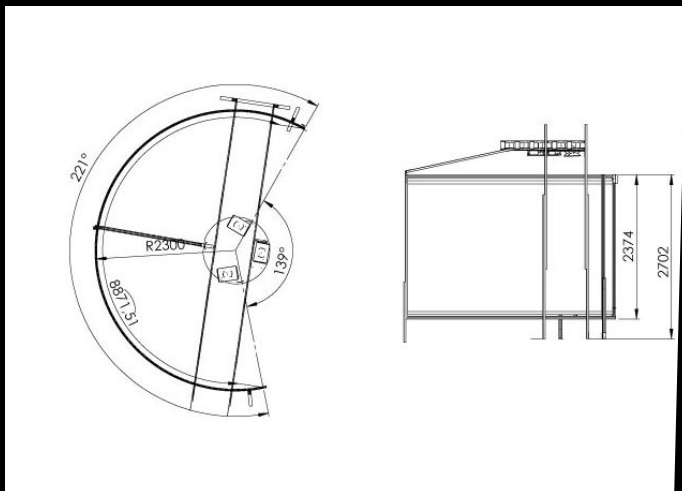
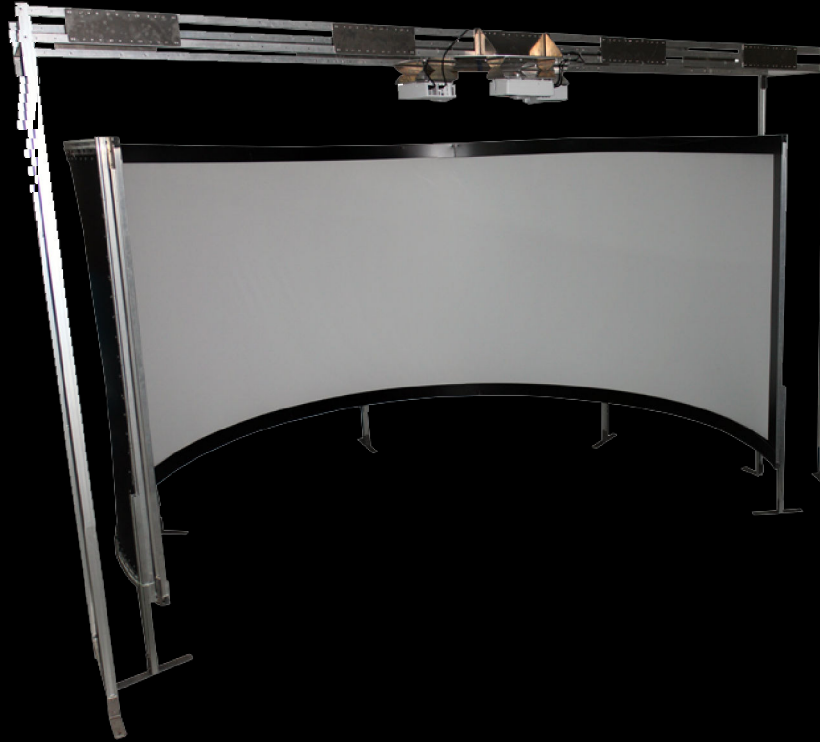
- \* Height and depth of the armchair electrically adjustable.
- \* Adjustable backrest.
- \* Folding arms adjustable in double position.
- \* Padded and lined in high quality fabric.
- \* Headboard adjustable in height.
- \* Adjustment scale of the piloting armrest.
- \* (Optional) Seatbelts.

## VISUAL SYSTEM

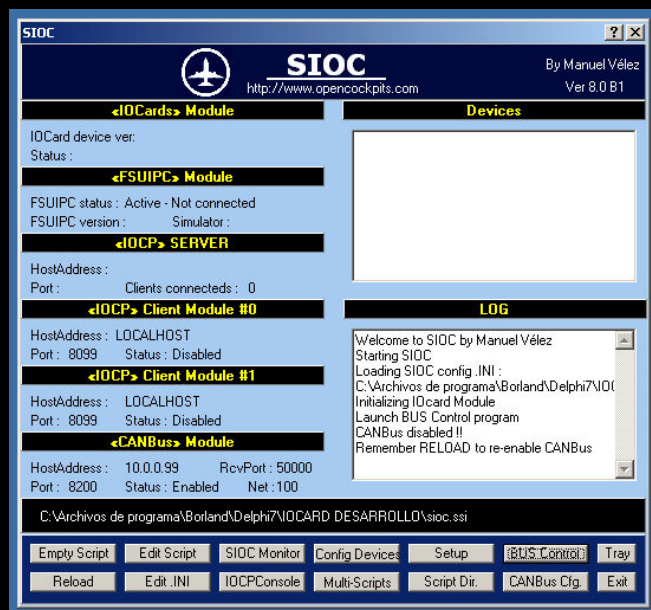
Our visual system is based in one cylindrical screen of 220 degrees and 2.3 meters of radius.

We use 3 channels with Full HD projectors with specific software for warp and blend.

The optimum height from the ground is 2.7 meters, and with the radius of 2.3 meters it fits in an environment of 5 by 4 meters.







## INTERFACE SOFTWARE

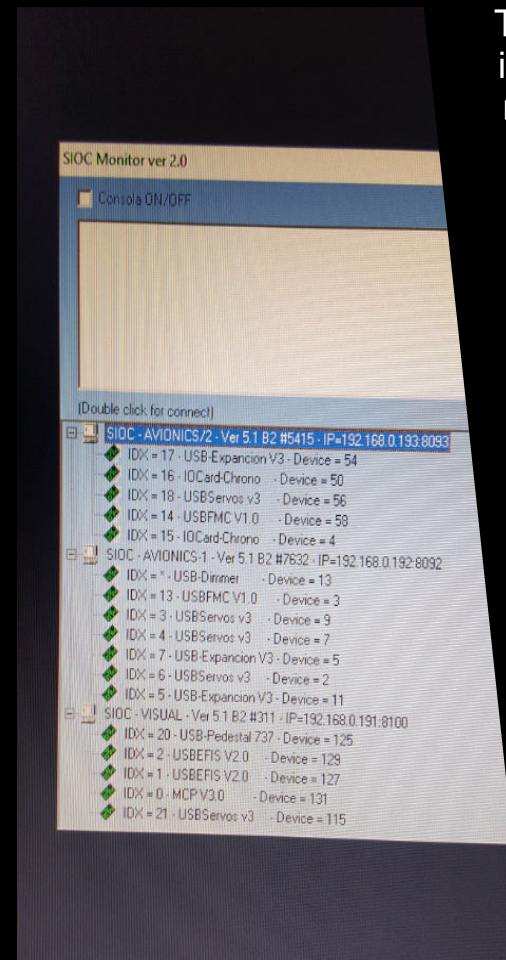
The interface software that includes our cockpit is one of the most powerful on the market.

Allows in real time, check and test any element of the cockpit, from computers, indicators, displays, switches, controls ...

With its powerful script language it also allows to develop specific simulations for any element. Being able to program for example the opening of a real access door, an air conditioner, or any imaginable condition.

It has a development SDK in case it is used in specific tasks.

It is compatible with practically all the simulation software of the market.



## COMPUTERS AND ELECTRONIC SYSTEM

In the installations we make, we incorporate the entire system of industrial computers and electronic racks.

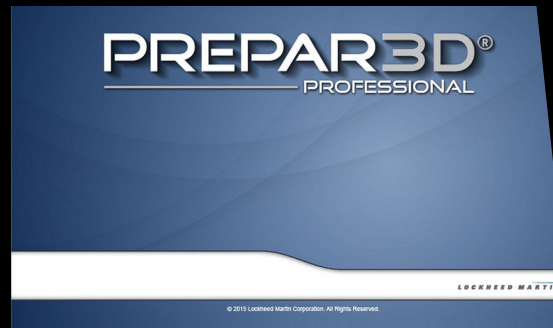
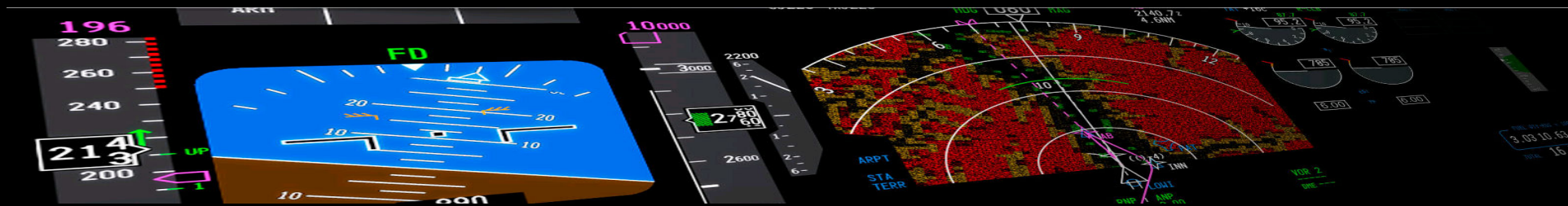
The rack includes 3 computers, 1 main with Intel latest generation processor i7, with a powerful Nvidia graphics card of the 2080 family with up to 4 graphic outputs.

The other 2 computers are dedicated to avionics.

The system includes ethernet switches, industrial USB hubs or CanBus Ethernet, Wifi modem, wiring, several converters and everything necessary for a perfect connection with the cockpit.



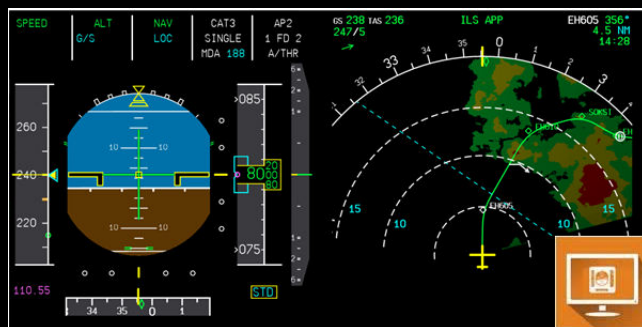




## SIMULATION SOFTWARE

Our simulator is prepared to be used directly with professional Prepar3D, and PROSIM-A320.

These programs would complete the simulation of the A320's cockpit.



Prepar3D is basically used for the flight model (adjusted by PA320), generation of the visual environment, and basic aircraft model.

ProsimA320 is the software that is responsible for the simulation of systems and avionics, as well as the console of the instructor.

# DIFFERENT OPTIONS FOR MOUNT THE COCKPITS



MIP without shell



Estructures  
for mount  
Overheads



Pedestal Módulo



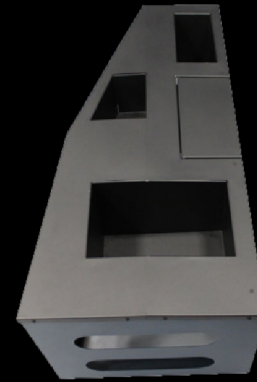
Choose your  
components  
to include

# OPTIONAL COMPONENTS



## OPTIONAL VISUAL SYSTEM

This is a system based in 3 x 65" displays 4K resolution with special supports for cover the main parts of the pilots visual.



## COMPARTMENTS

Cabinet of objects of the A320 cockpit. Robust manufacture in steel / aluminum and painted in two colors with powder paint in the oven. The product can be integrated into the SHELL.



## SEAT BELTS

Replica of Seat Belt for use with our seats.



# OPTIONAL COMPONENTS

## INSTRUCTOR OPTIONS

It allows the instructor to from their control post, manage your training session comfortably. The structure is equipped with an access door and wheels and can be easily added to the cockpit. In addition to this structure, optionally, an instruction console with touch screens can be added, as well as a specialized seat for the instructor, with rails for easy movement around the observation points.

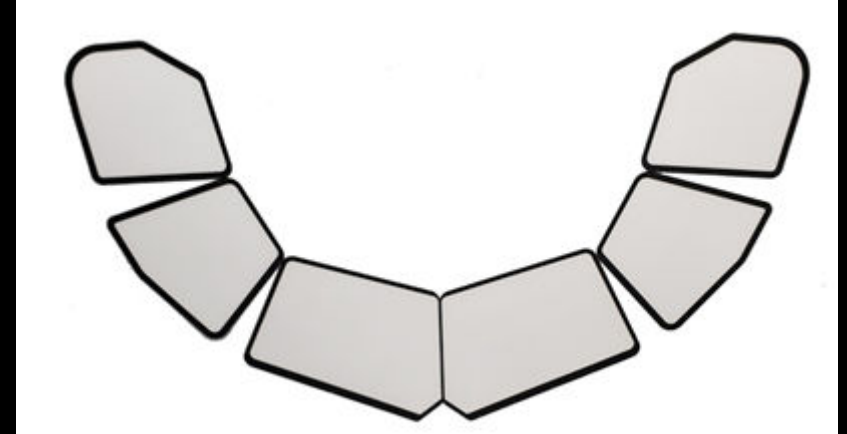


# OPTIONAL COMPONENTS



## EMERGENCY GRAVITY GEAR LEVER

Emergency Gravity Gear lever developed in the image of the original to provide the user with excellence in simulation, providing a real simulation both in functionality and aesthetics.



## A320 WINDOWS

Cabin windows to give the user excellence in simulation, providing them with a realistic immersion in their cockpit.



## A320 COMPASS

A320 compass developed in the image of the original to give the user excellence in simulation, providing a real simulation both in functionality and aesthetics.

# OPTIONAL COMPONENTS



## **SIDESTICK PRO**

Incredible A320 sidestick replica developed in the image of the original. It allows a real movement of the aircraft thanks to the movement management through a fully adjustable hydraulic system, offering the possibility of adjustment in terms of forces to the most demanding users.



## **A320 AFT PRO**

A320 AFT developed in the image of the original to give the user excellence in simulation, providing a reliable simulation both in functionality and aesthetics.



## **DOME LIGHTS**

Dome lights dimmable through the OVH



# OPTIONAL COMPONENTS



## **PEDALS PRO WITH FORCE CONTROL**

Pedals with control load,  
Rudder Trim with auto position,  
auto-calibration and  
real time load information



## **PEDALS PRO**

Replica of original Airbus pedals,  
completely made of metal and fiber.  
Developed under high quality standards  
including position adjustment and linked (rudder).

## **TABLE WITH FOOTREST**

High quality table made of metal construction.



# PHOTO GALLERY





<http://www.opencockpits.com>  
e-mail : [sales@opencockpits.com](mailto:sales@opencockpits.com)

Opencockpits S.L.U.  
CIF B21466537  
Polígono Romeralejo Naves 9 ,10, 11  
21007, Huelva, Spain